

Vocabulary

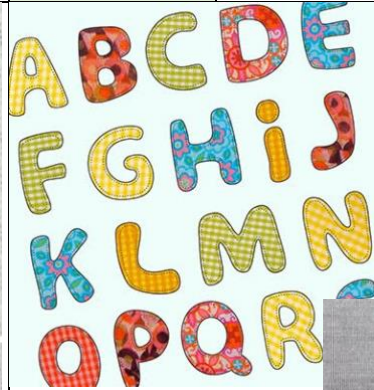
applique

Applique is a type of embroidery that employs a smaller patch or fabric to be applied or sewed onto a larger fabric or surface

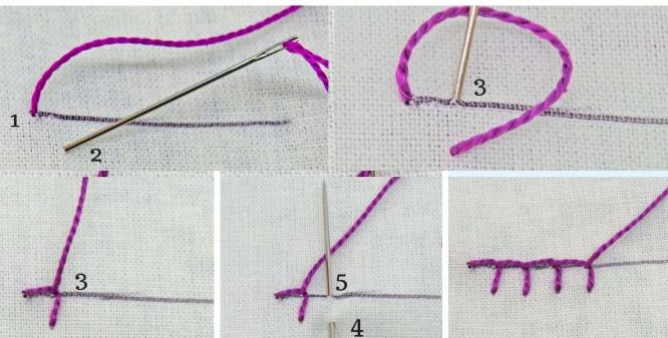
Blanket stitch

a strong reinforcing stitch for edges of blanket and other thick material;

Blanket Stitch



Applique is where one piece of fabric is attached to another using a blanket stitch around the outside edge of the shape.



Dindga McCannon b. 1947

McCannon began her career as a painter over 50 years ago, but fiber art soon came calling and she's worked with diverse materials ever since. "Scraps of African fabric began creeping into my paintings," she recalls. "Artistically it gives me so many more options and the opportunity to use things that have been touched by human hands, like buttons and handmade fabric." Often embroidered with beads, buttons, and charms, and quilted from vibrant fabric, the artist's work seems to shimmy and shine.

