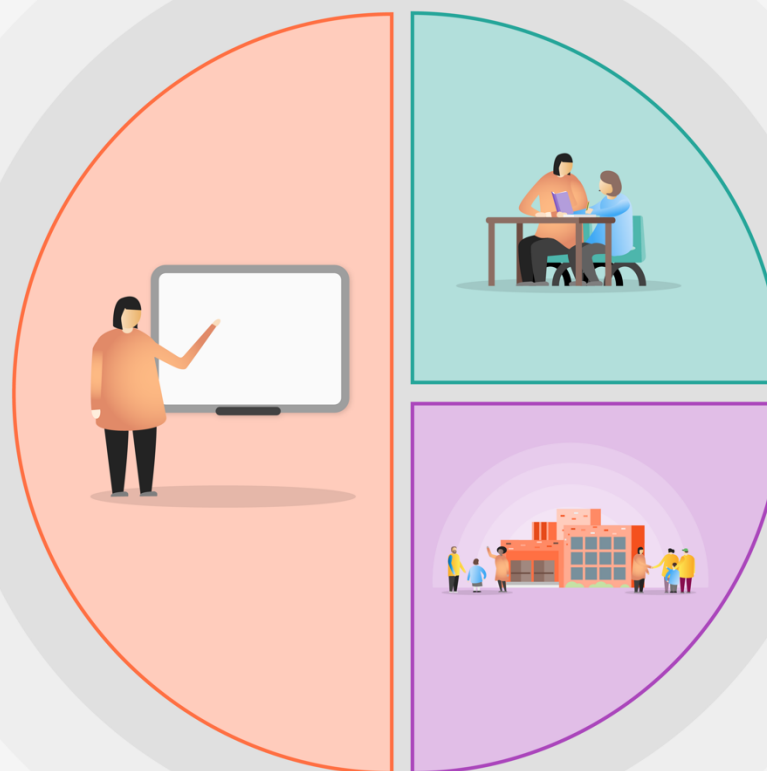


1 Teaching

- Quality First Teaching supported by evidence-informed CPD for teachers and support staff – reducing working memory, use of knowledge organisers, remote teaching, assessment
- Baseline assessments – analysed to show gaps in learning and to inform future planning
- Recovery Curriculum planned in all subjects
- A broad and engaging curriculum that focuses on essential knowledge to enable pupils to access the next step in learning
- Frequent low stake testing to ensure all pupils, in particular disadvantaged pupils, experience success and celebrate the acquisition of knowledge.
- Focus on consolidation of basic skills. The core skills which enable successful learning will require increased curriculum time across all year groups.
- Homework to be delivered on Microsoft teams to provide familiarity with learning platform.



2 Targeted academic support

- Targeted interventions informed by accurate analysis of gaps
- Effective deployment of teaching assistants

3 Wider strategies

- Additional laptops purchased to enable classroom learning to replicate remote learning and support interventions

Catch up in our schools IS NOT:

Cramming missed learning

Pressuring children and families into rapid learning